



**Stoneacre**  
Properties



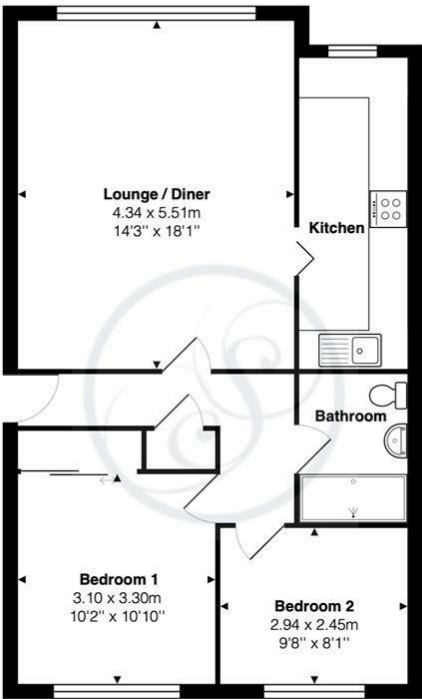
**Wentworth Court, Nursery Lane, Leeds, LS17 7HN**  
**£895 Per Calendar Month**

Stoneacre Properties are delighted to offer to the rental market this fantastic first floor apartment in Alwoodley. This two bedroom apartment briefly comprises a spacious lounge/diner, kitchen, master bedroom with fitted wardrobes, second smaller bedroom and modern bathroom with shower over bath. This property is close to local amenities and bus routes. Viewings are highly recommended to avoid disappointment. AVAILABLE MID FEBRUARY 2025!





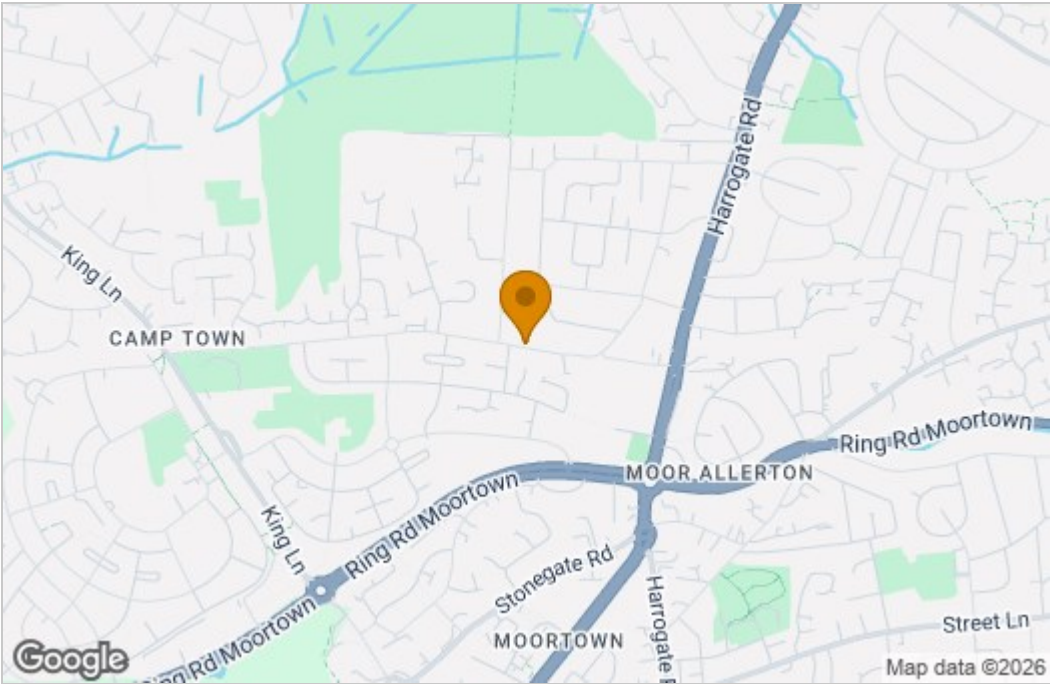
Floor Plan



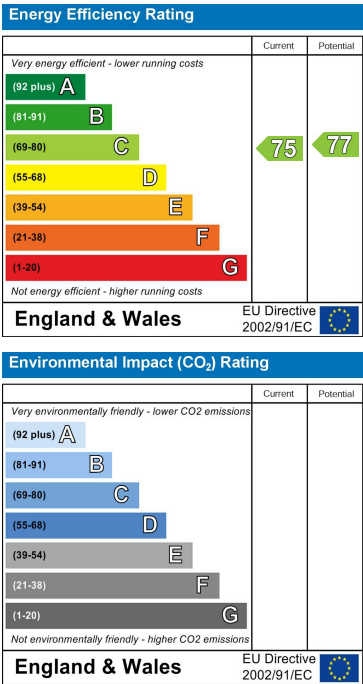
Total Area: 62.9 m<sup>2</sup> ... 678 ft<sup>2</sup>

All measurements are approximate and for display purposes only

Area Map



Energy Efficiency Graph



These particulars, whilst believed to be accurate are set out as a general outline only for guidance and do not constitute any part of an offer or contract. Intending purchasers should not rely on them as statements of representation of fact, but must satisfy themselves by inspection or otherwise as to their accuracy. No person in this firm's employment has the authority to make or give any representation or warranty in respect of the property.

